

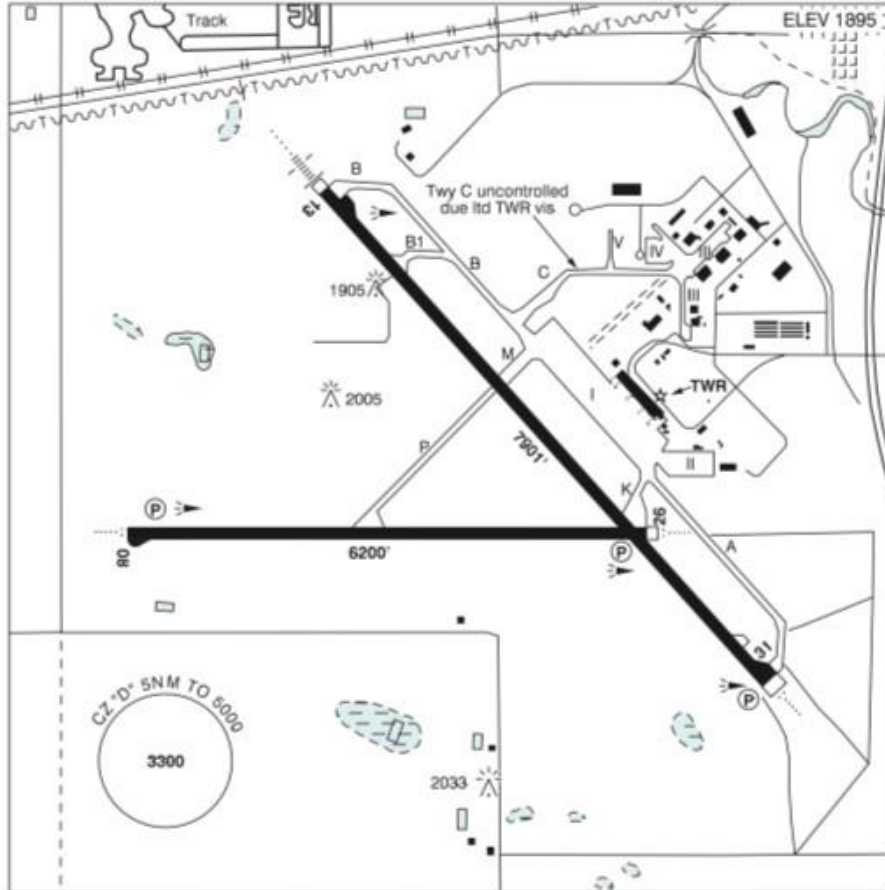
CANADA FLIGHT SUPPLEMENT / GPH 205

Effective 0901Z 5 November 2020 to 0901Z 31 December 2020

AERODROME/FACILITY DIRECTORY B907

REGINA INTL SK

CYQR



REF	N50 25 56 W104 39 58 2SW 10°E (2011) UTC-6 Elev 1895' A5006 LO2 HI4 T1 CAP
OPR	Regina Aprt Authority (RAA) 306-761-7550 Cert
PF	A-1,2,3,6,7 Tml opr 12-05Z C-4,5
CUST	AOE/200 (300 with staged off-loading) 888-226-7277 14-06Z May 6-Nov 5, 14-06Z Nov 6-Dec 3 O/T O/R, H24 Dec 4-May 5
FLT PLN	NOTAM FILE CYQR
FIC	Winnipeg 866-WXBRIEF (Toll free within Canada) or 866-541-4103 (Toll free within Canada & USA)
WX	METAR H24. TAF H24, issue times: 00, 06, 12, 18Z.

CANADA FLIGHT SUPPLEMENT / GPH 205

Effective 0901Z 5 November 2020 to 0901Z 31 December 2020

B908 AERODROME/FACILITY DIRECTORY

REGINA INTL SK (Cont'd)		CYQR
SERVICES	Call out chg may be levied for one or more svcs	
FUEL	100LL, JA-1 (FSII avbl), SP, HPR 12-04Z	
OIL	All	
S	1,2,3,4,5,6	
ARFF	DESIGNATED CAT 7 1400-0330Z, hrs are seasonally adjusted earlier and/or later by up to 90 min to accommodate airline schedule changes in Apr & Oct each year. O/T aprt closed to acft 20 seats & abv, exc for diversions or as an altn A/D without PPR, call out chg after hr with 2 hr PPR. Ctc 306-761-7550 (H24) for current hr of ops.	
SUP FL	D & A-ice, LPOX	
JASU	CE16, Air start	
PVT ADV	KREOS Aviation 122.725 306-924-8910 10-04Z O/T 1 hr PN, call out chg.	
MIL CON	G.E.M. Flight Group Inc (Shell) 306-359-0020	
RWY DATA	Rwy 13(128°)/31(308°) 7901x150 asphalt Rwy 08(080°)/26(260°) 6200x150 asphalt	
RWY CERT	Rwy 13 RVR 1200(1/4sm)/Rwy 31 RVR 1200(1/4sm) AGN IV Rwy 08/26 AGN IV	
TWY CERT	Twy C: AGN IIIB fr Twy B to Apron V & AGN II fr Apron V to Apron III	
TWY	Twy C uncontrolled due ltd TWR vis. Twy C btwn Apron V and Apron III rstd to acft less than 24m (78').	
APRON	Apron I rstd to sked commercial tfc only. Exceptions require prior appr of aprt opr. Apron II posn 1 rstd to commercial tfc only. Exceptions require prior appr of aprt opr. Apron III single row prkg only. Apron IV rstd to acft under 5,000 lbs.	
RCR	Opr 306-761-7550 CRFI avbl ltd hrs, PLR/PCN	
LIGHTING	08-AO(TE HI) P2, 26-AO(TE HI) P2, 13-AN(TE HI), 31-AO(TE HI) P2	
COMM		
RCO	Winnipeg rdo 123.55 (FISE) 126.7 (bcst)	
ATIS	127.0 12-05Z Nov 1-Mar 31; 12-04Z Apr 1-Oct 31	
GND	121.9 12-05Z Nov 1-Mar 31; 12-04Z Apr 1-Oct 31	
TWR	118.6 (E) 12-05Z Nov 1-Mar 31; 12-04Z Apr 1-Oct 31 (emerg only 306-359-5013)	
MF	rdo 118.6 (E) 5NM 5000 ASL (CAR 602.98) 05-12Z Nov 1-Mar 31; 04-12Z Apr 1-Oct 31 (emerg only 306-359-5018)	
PAL	Winnipeg Ctr 120.1 123.8	
NAV		
NDB	QR 290 (L) N50 22 10 W104 34 22 FINDLAY ZQR 204 (L) N50 25 44 W104 31 38	
VORTAC	AJAX ZRS 219 (L) N50 29 07 W104 44 10	
ILS	LUMSDEN VLN 114.2 Ch 89 N50 40 01 W104 53 23 (1895') IQR 109.5 (Rwy 13) RVR	

CANADA FLIGHT SUPPLEMENT / GPH 205

Effective 0901Z 5 November 2020 to 0901Z 31 December 2020

AERODROME/FACILITY DIRECTORY B909

REGINA INTL SK (Cont'd)

CYQR

PRO	Rgt hand circuits Rwy 08 & 13 (CAR 602.96). RVO for Rwy 13/31: During ATC hours of ops, when vis is below 1/4sm and RVR is 1200 or above, one in/one out ops will be provided.
NOISE	NOISE ABATEMENT PROCEDURE: All acft. ATC assigned rwys will divert arr & dep from noise sensitive areas. When twr clsd & operational conds permit, arr on Rwys 08 or 13, dep on Rwys 26 or 31. See CAP.
CAUTION	Ozone research radiosonde balloon flt fr N50 12 10 W104 42 45 (13.9NM S airport), max alt 115,000 MSL. Launches at 1715Z every Wed wx permitting, otherwise launches Thu or Fri at 1715Z. High sfc winds will delay release to 2315Z Wed, Thu or Fri. Inst package measures 20x20x26 cm, wt 1.2 kg, off-white 2 m dia balloon. Ascent rate 1000' per min, aprx ascent matrix: 10,000 MSL, launch + 8 min, 20,000 MSL, launch + 18 min, 30,000 MSL, launch + 28 min, 40,000 MSL, launch + 38 min, 50,000 MSL, launch + 48 min. Stationary vertical green laser lgt beam projection from Observatory at N50 12 14 W104 42 47 (aprx 14NM S A/D). Beam diverges by factor of 10 with beam dia aprx 15' at 3280 AGL and aprx 30' at 6560 AGL abv lgt source. Laser lgt beam may be injurious to eyes within 5200' vertically of lgt source. Flash blindness could occur to 8600' ASL and cockpit illumination beyond this dist. Laser beam will be activated periodically in non-precipitation conds only. Extv bird & wildlife activity in vic A/D.

REGINA FSS - RCO

Buffalo Narrows 118.65 (RAAS) 14-02Z (N55 51 W108 29)
Stony Rapids 122.1 (RAAS) 13-04Z (N59 11 W105 55)
Yorkton 119.65 296.6 (RAAS) 12-04Z (N51 15 W102 27)

REID'S FIELD ON — See CAMBRIDGE / REID'S FIELD

REINDEER LAKE SK

CRL7

REF	N57 17 17 W102 31 30 8°E (2013) UTC-6 Elev 1128' A5024 LO1 RCAP	
OPR	Reindeer Lake Lodge 780-812-9280 or 780-635-2165 Reg PPR	
PF	C-1,2,5	
FLT PLN	NOTAM FILE CYVC	
FIC	Winnipeg 866-WXBRIEF (Toll free within Canada) 866-541-4103 (Toll free within Canada & USA)	
WX	ALTIMETER/WIND 780-812-9280 ltd hrs (see COMM)	
RWY DATA	Rwy 07(068°)/25(248°) 4045x110 GRVL Rwy 07 up 0.30%	
RCR	Opr Jun 1-Sep 15 No win maint.	
COMM		
ATF	UNICOM (AU) ltd hrs O/T t/c 122.8 5NM 4200 ASL	